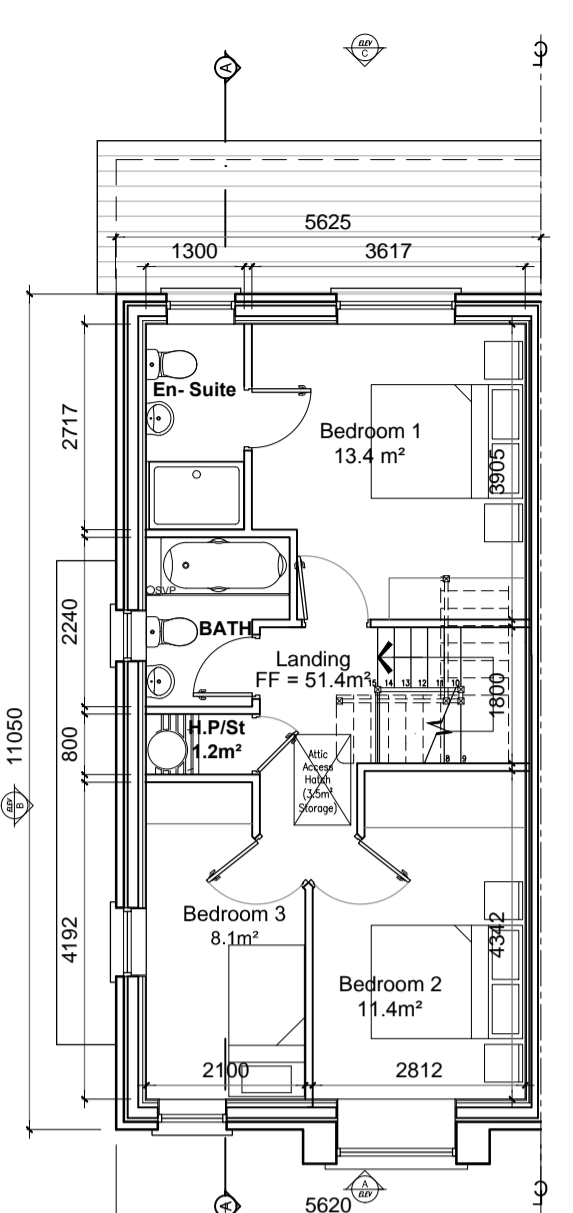
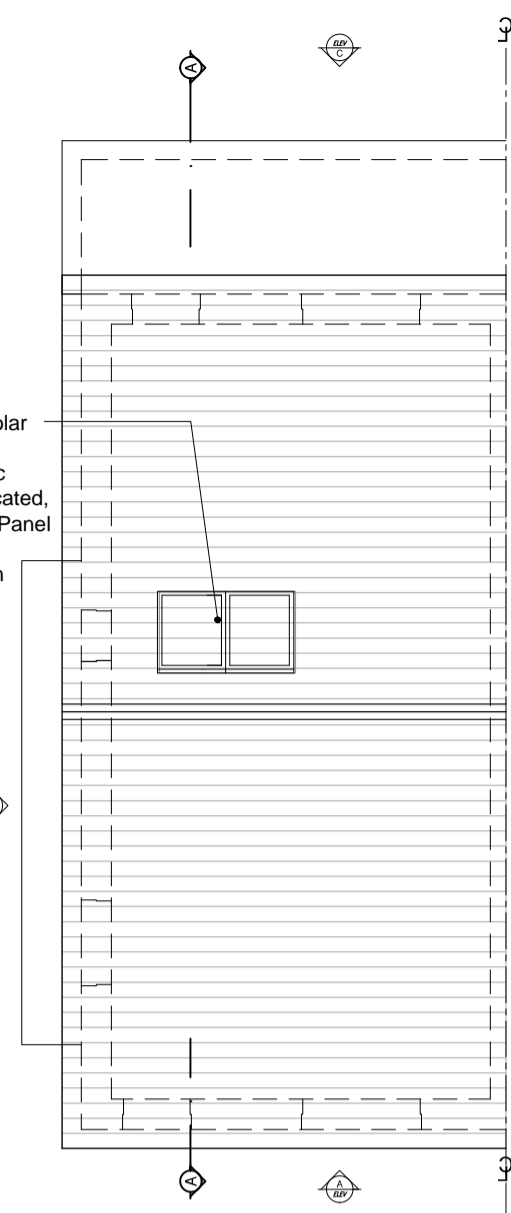


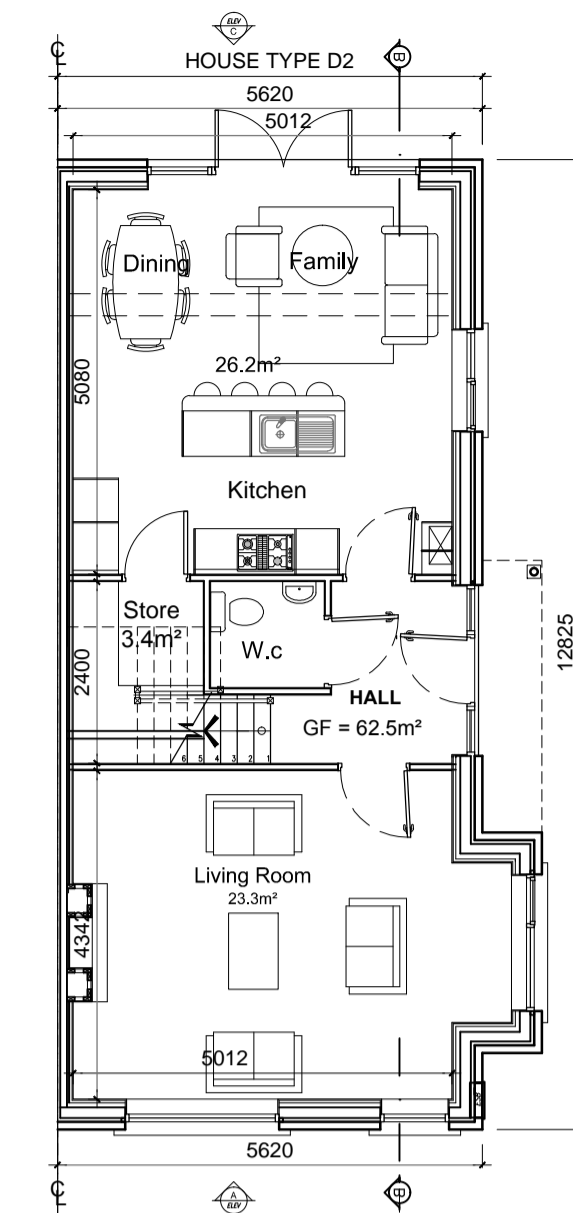
Ground Floor Plan Left Entry
 area 62.5m² / 673 ft²
 O/ALL AREA 114m² / 1,227 ft²



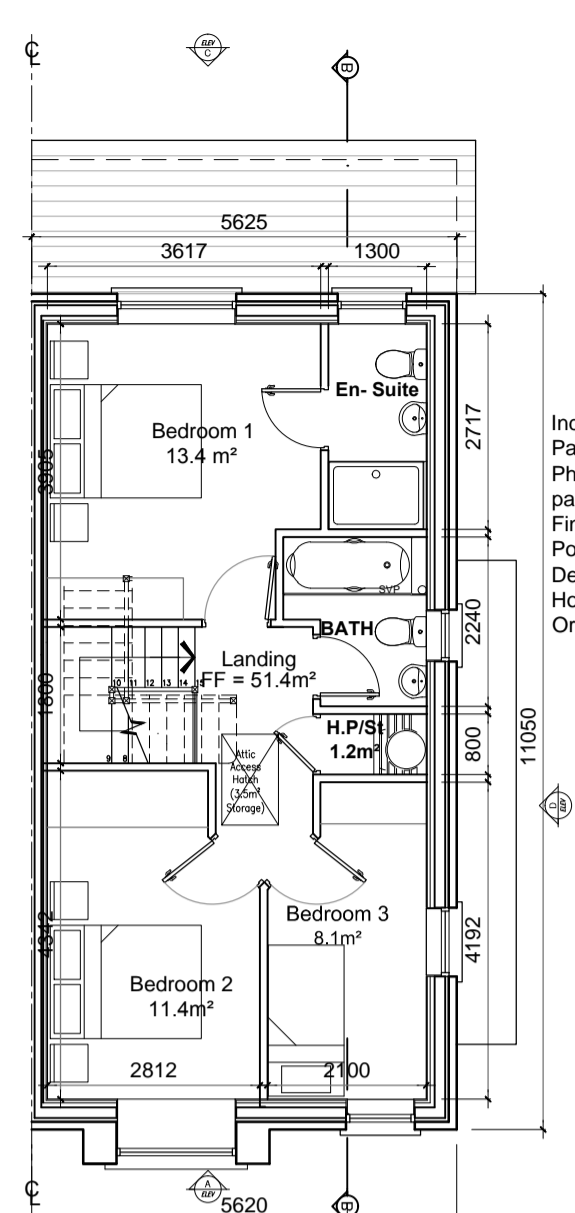
First Floor Plan Left Entry
 area 51.4m² / 553 ft²



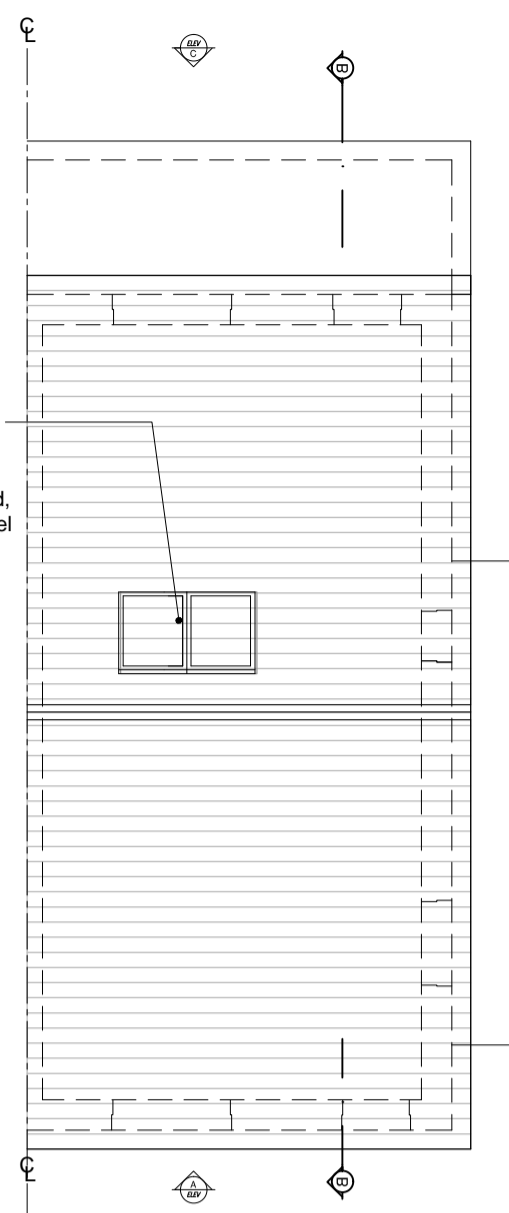
Roof Plan



Ground Floor Plan Right Entry
 area 62.5m² / 673 ft²
 O/ALL AREA 114m² / 1,227 ft²



First Floor Plan Right Entry
 area 51.4m² / 553 ft²



Roof Plan

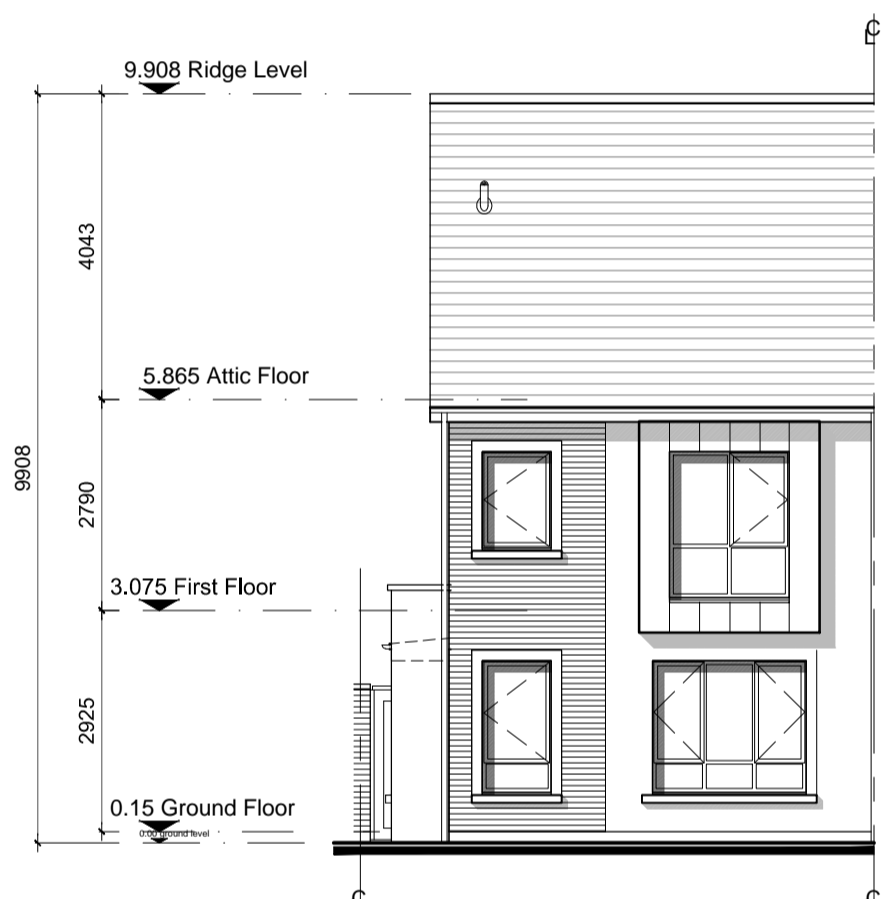
GENERAL NOTES

THIS DRAWING TO BE READ IN CONJUNCTION WITH ARCHITECT'S DRAWINGS, CONSULTANT ENGINEER'S DRAWINGS AND SPECIFICATIONS & LANDSCAPE ARCHITECT'S DRAWINGS
 REFER TO ARCHITECT'S SITE PLAN PL002 and PL003 FOR NORTH ORIENTATION.
 LEVELS GIVEN ON HOUSE TYPE DRAWINGS ARE GIVEN TO A LOCAL ABSOLUTE ZERO LEVEL. FOR SPECIFIC LEVELS DEPENDING ON INDIVIDUAL UNIT LOCATION, REFER TO ARCHITECT'S CONTEXT SECTIONS AND ENGINEER'S DRAWINGS WHERE LEVELS ARE ALL GIVEN IN RELATION TO LAND SURVEYOR'S BENCHMARK BASED ON MALIN HEAD DATUM LEVEL.

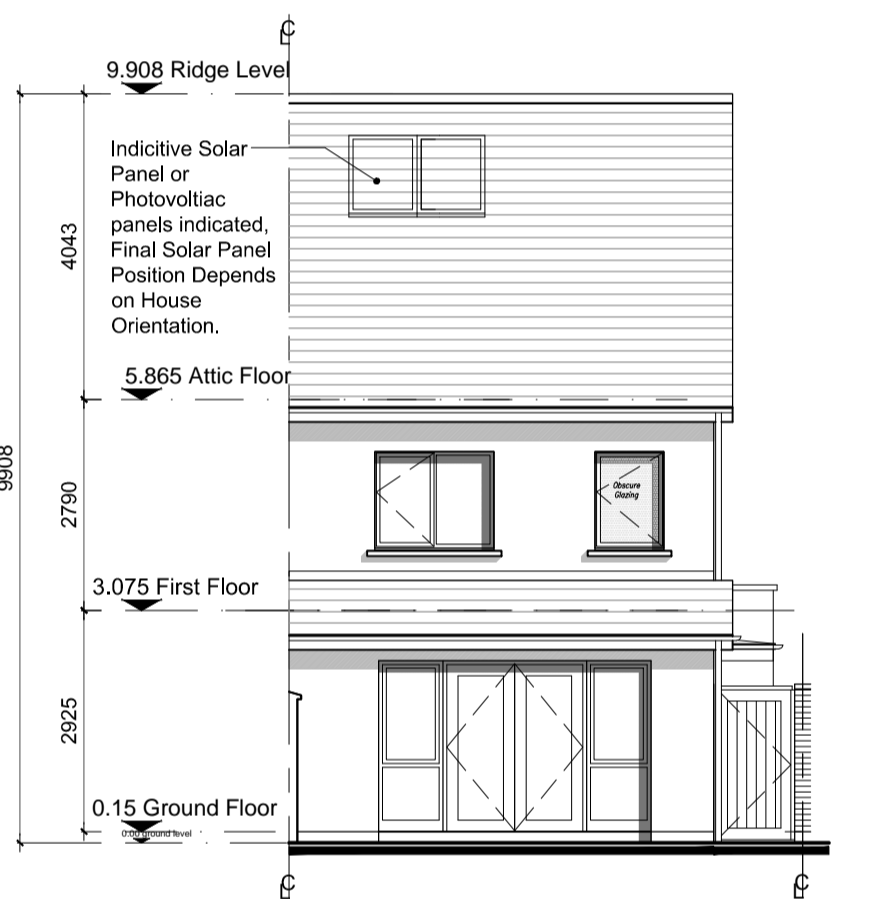
REFER TO SITE LAYOUT PLAN FOR NORTH ORIENTATION
 REFER TO CONSULTING ENGINEERS DRAWINGS FOR BLOCK LEVELS

NOTES ON FINISHES:

- ROOF: TO BE FINISHED IN SLATE OR CONCRETE ROOF TILES IN SELECTED COLOUR OR SIMILAR APPROVED.
- WALLS: SELECTED CLAY BRICKWORK WHERE INDICATED OTHERWISE PAINTED SAND / CEMENT RENDER OR SELF COLOURED RENDER OR DRY-DASH TO CONCEALED SIDE GABLES.
- JOINERY: ALL WINDOWS AND DOORS, FRAMES AND LEAVES, TO BE ALUMINIUM POWDER-COATED TO APPROVED COLOUR OR UPVC OR PAINTED TIMBER TO APPROVED COLOUR. OBSCURE GLAZING WHERE INDICATED TO SENSITIVE WINDOWS.
- RAINWATER GOODS: GUTTERS, DOWNPIPES, AND FIXINGS TO BE UPVC OR ALUMINIUM POWDER COATED TO SELECTED COLOUR TO MATCH ROOF SLATES
- * SOLAR PANELS: INDICATIVE SOLAR PANEL POSITION, FINAL SOLAR PANEL POSITION DEPENDS ON HOUSE ORIENTATION. THE SOLAR PANELS SHOWN ARE A PROVISIONAL OPTION TO SATISFY RENEWABLE ENERGY REQUIREMENTS OF BUILDING REGS PART L. SOLAR PANELS MAY BE OMITTED IN FAVOUR OF ALTERNATIVE RENEWABLE ENERGY SOURCE.



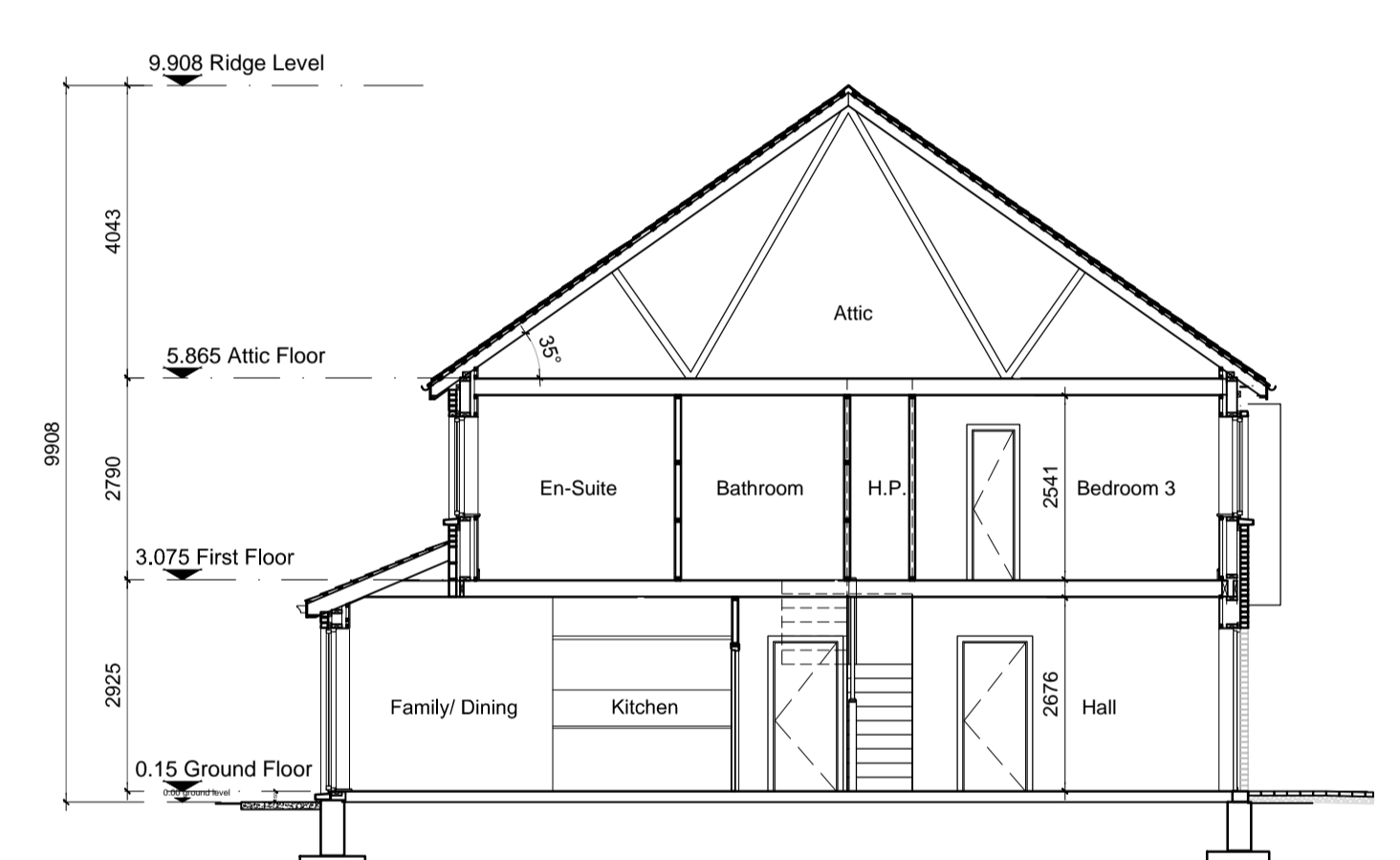
Front Elevation 'A' Left Entry



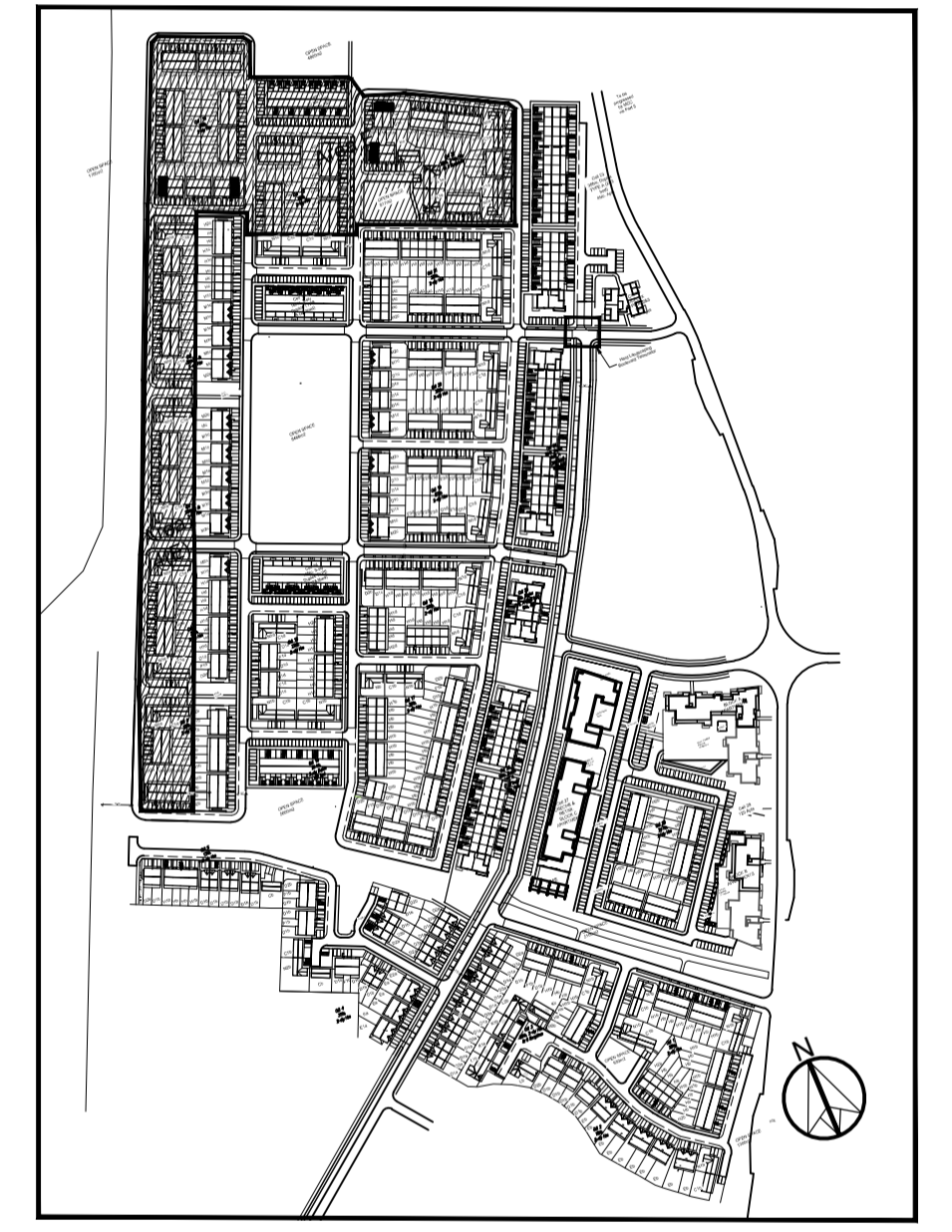
Rear Elevation 'C' Left Entry



Side Elevation 'D' Left Entry



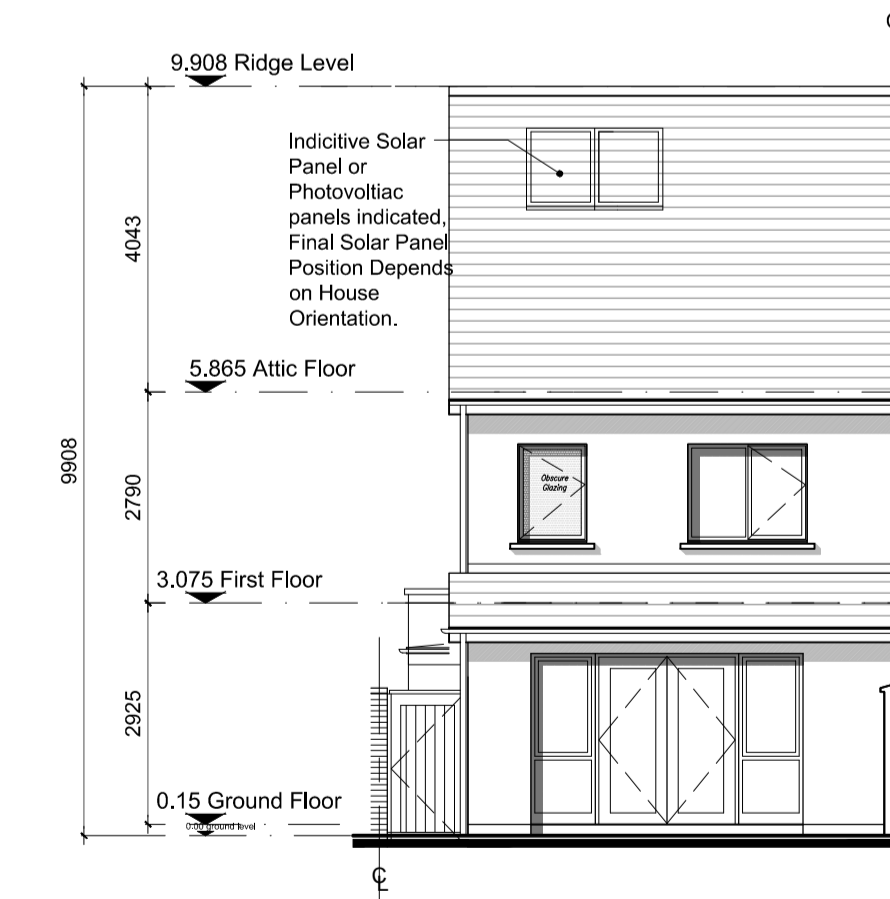
SECTION A-A



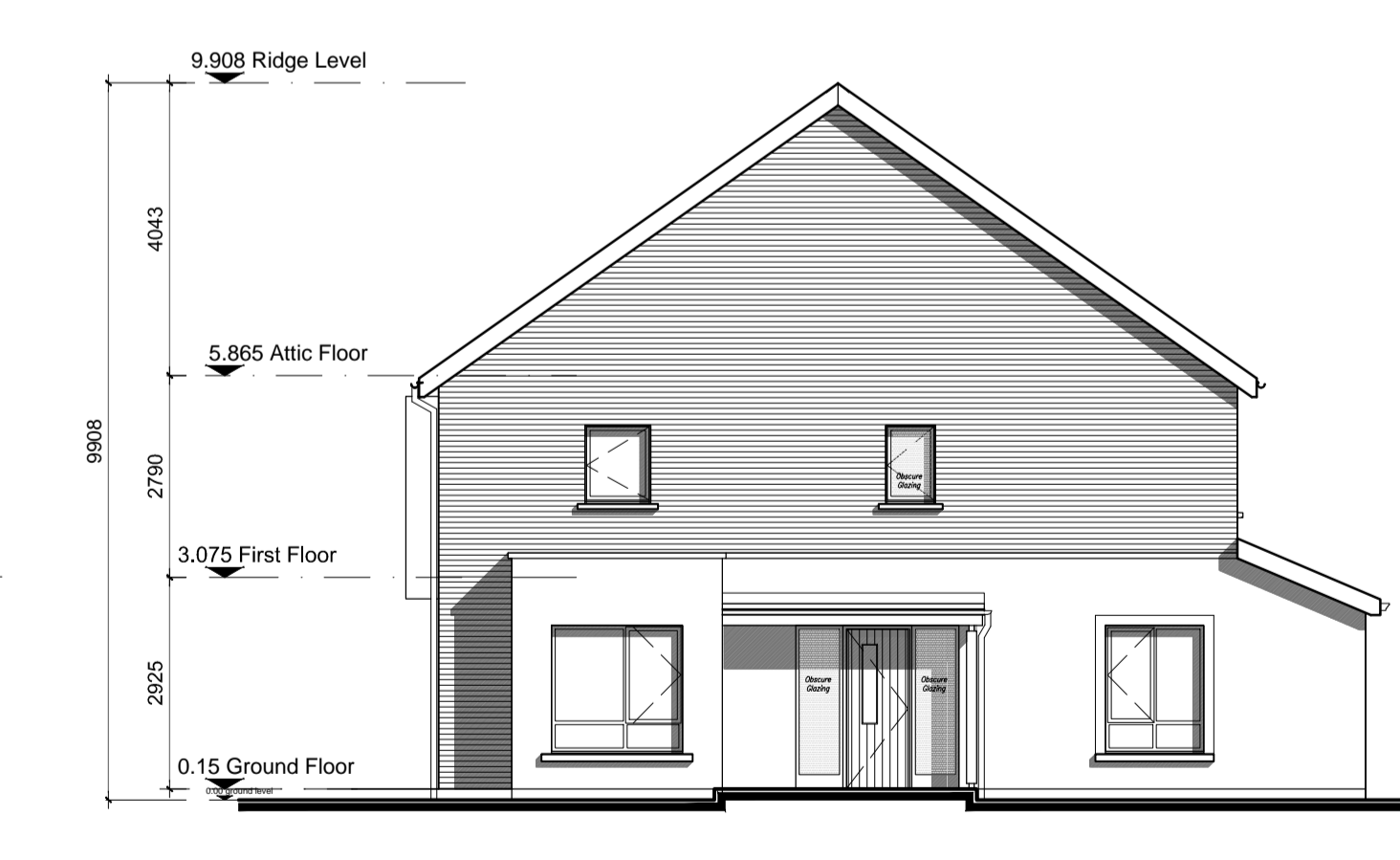
KEY PLAN - NTS



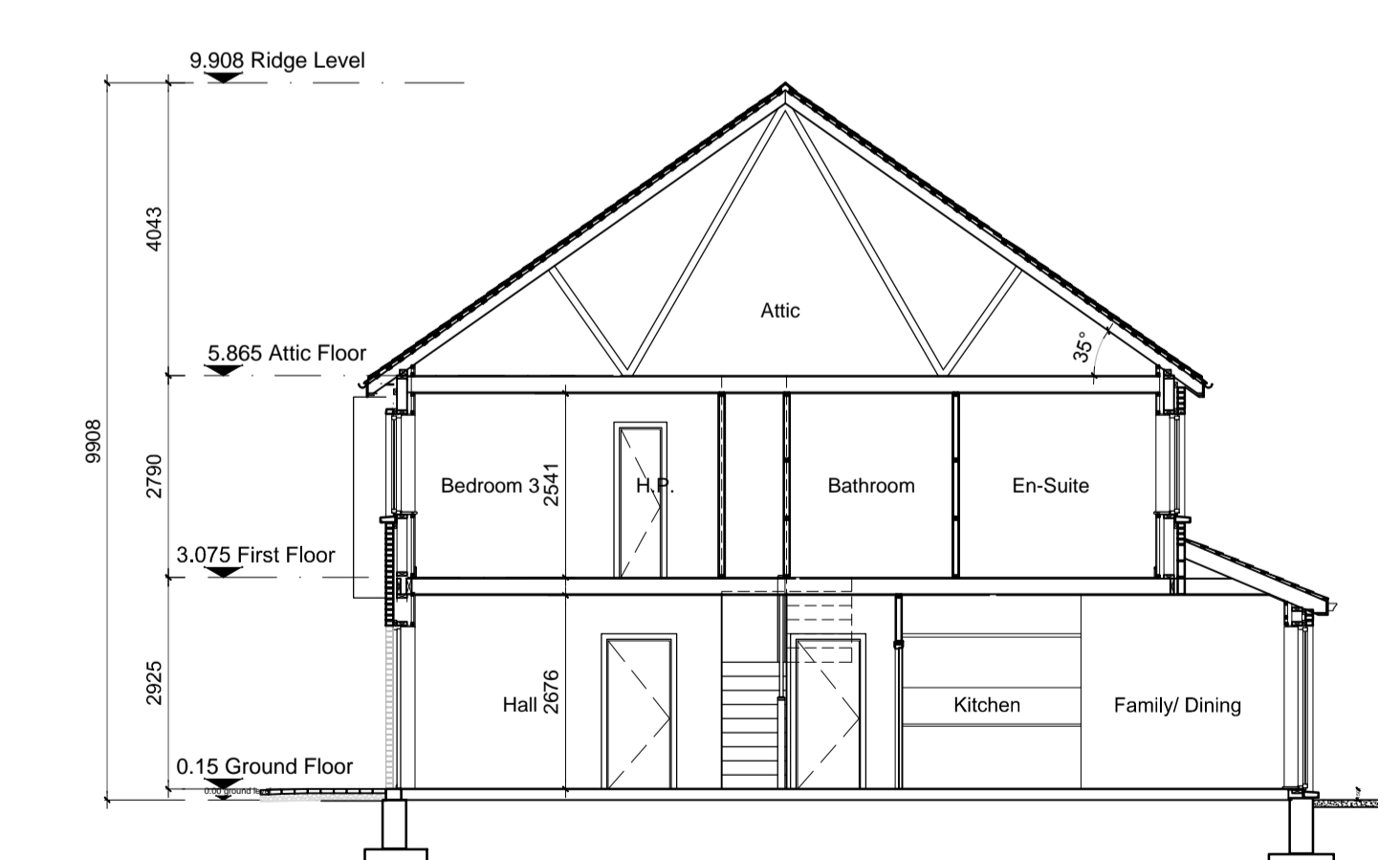
Front Elevation 'A' Right Entry



Rear Elevation 'C' Right Entry



Side Elevation 'D' Right Entry



SECTION B-B

Character Area E

D2e	HOUSE TYPE D2e	End Terrace
	2 STOREY	114 m ² / 1,227ft ²
	3 BED	No of Units: 04

NOTES:

DO NOT SCALE FROM DRAWINGS. WORK TO FIGURED DIMENSIONS ONLY. ARCHITECT TO BE NOTIFIED OF ALL DISCREPANCIES.

REVISIONS		
DATE	DESCRIPTION	No.



PROJECT TITLE: Dunshaughlin East SHD	DATE: Dec'18	DRAWN BY: DB
DRAWING TITLE: House Type D2e Left/Right Entry Plans, Elevations, & Section	SCALE: 1:100@A1	REVISION:
JOB NO: 16028.1SHD145	DRAWING NO:	